

Chepstow House School

Travel Information Pack 



Welcome...

...to Chepstow House School

Chepstow House School is a happy and purposeful family environment, where every member of the school community is important and all are valued as individuals. The school aims to discover the best in every child and challenge them to go beyond their expectations.

The school is a centre of learning excellence. Children develop as well-rounded individuals, while growing and interacting as part of a community that promotes a spirit of collaboration, collective accountability and responsibility.

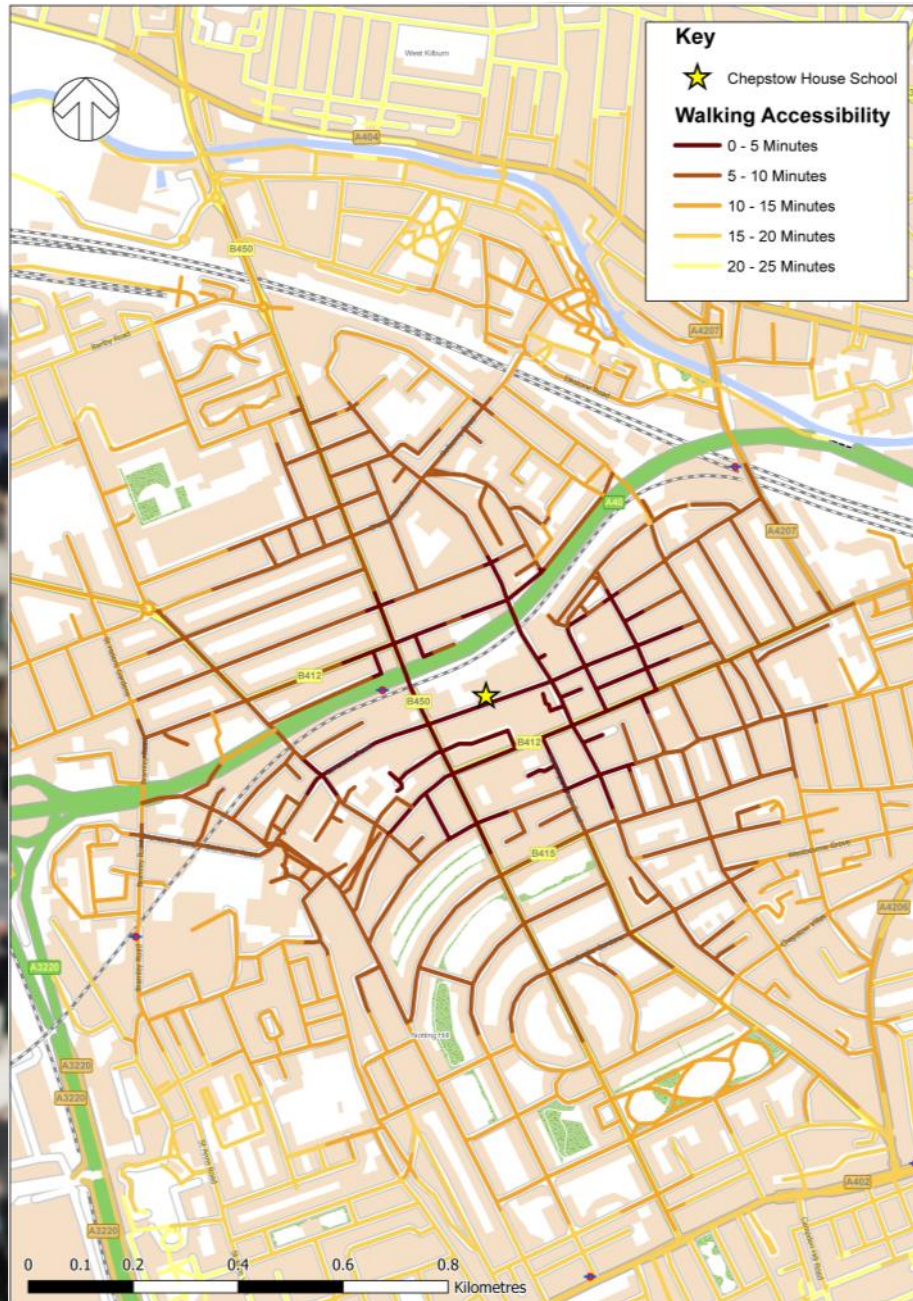
This Travel Information Pack has been prepared to engage with current and prospective parents. It is important that parents are aware of the limited parking facilities in the Ladbrooke Grove area and the need to consider alternative methods of travel to the car when travelling to and from the school.

Located on Lancaster Road, close to Ladbrooke Grove Underground Station, Chepstow House School is well placed to make sustainable travel a real option for parents and pupils. Chepstow House School have worked with transport consultants WSP to devise a School Travel Plan which combines a number of measures which seek to encourage more sustainable travel to and from school.

This brochure provides information that allows you to consider how best to make your journeys to and from Chepstow House School and in particular information on using alternative modes to the private car.



By Foot



Good quality, direct and well-lit pedestrian routes are provided throughout the area, connecting the school to existing footways which provide routes to local residential areas and public transport connections.

Aside from being the most environmentally friendly way to travel, walking can make you feel good and provide genuine health benefits to parents and children alike.

The map opposite shows how far you can travel in 25 minutes just by walking. It demonstrates that walking can make a great alternative to car travel if you live locally.

Walk Once a Week (WOW) Initiative

WOW is a walking initiative promoted by Chepstow House School to actively encourage children and their parents to walk to school at least once a week. Children who do, will be rewarded at the end of each WOW month. Pupils will be given further information on the initiative from their respective teachers. We look forward to seeing who can rise to the challenge.

Park & Stride

As part of our walking initiative we also encourage Park & Stride. This is an initiative that allows parents to park a short distance away from the school and walk the last part of the journey. This helps to reduce the problem of congestion and pollution around the school. Children who Park & Stride are also eligible to take part in the WOW initiative, as long as they include a 10 minute walk in their journey.

By Bicycle

Cycling is often the fastest and most reliable mode of transport (door-to-door) in London. It also helps contribute towards an active and healthy lifestyle for both parents and children.

In comparison to car travel, cycling can significantly reduce the everyday hassle of finding a parking space and negotiating traffic jams on your journey to and from school. It also lowers travel expenses including congestion charging, parking and other general running costs associated with private car use.

The popularity of cycling in London has grown significantly in recent years and to facilitate cycling as a means of transport, Chepstow House School has cycle and scooter parking for staff and pupils.

There are a number of cycle routes throughout the local area. The map opposite shows how far you can travel in 30 minutes just by cycling

London Cycling Campaign

The London Cycling Campaign is the Capital's largest, most effective environmental organisation, seeking to help transform our city into a healthier, happier place to live. There are numerous benefits that accompany LCC membership including discounts in bike shops, local group membership and a subscription to London Cyclist magazine. To join simply go to www.lcc.org.uk



Walking and Cycling Events

Walk to School Week

As a means of promoting walking to school, Chepstow House will actively participate in the national Walk to School Week in May each year. This will involve challenges and informative activities to encourage children to walk to school and get active. More information can be found at www.walktoschool.org.uk.

Walk to School Week will also aim to promote and raise awareness of the Walk Once a Week (WOW) initiative which runs throughout the school year.

Road Awareness and Cycle Training

Chepstow House School will offer an annual school-wide programme of road safety awareness to all pupils, including special assemblies, lesson content and competitions. This will be incorporated as part of the specially organised Walk to School Week outlined above.

Depending on demand from parents and pupils, cycle training can also be provided through a Bikeability scheme which aims to get pupils trained and ready to cycle safely. Bikeability is described as 'cycling proficiency' for the 21st century, designed to give the next generation the skills and confidence to ride their bikes on today's roads. It's a government run initiative which also provides a range of games, interactive discussions, creative ideas and lesson plans – all designed to get the whole class inspired to get on their bikes. For further information visit bikeability.dft.gov.uk

Bike Week – A National Celebration of Cycling

Bike Week is an annual opportunity to make cycling part of everyday life by encouraging 'everyday cycling for everyone'. Demonstrating the social, health and environmental benefits of cycling, the week aims to get people to give cycling a try all over the UK. Find local events at www.bikeweek.org.uk



Bus Services

Another great way to travel is by public bus.

Children aged under 11 can travel free on buses at any time as long as they are accompanied by a fare paying adult. Children aged 11 to 15 years can get an 11-15 Oyster photocard to travel free.

Accessing local bus services from Chepstow House School couldn't be easier. There are several buses that stop in the local area. The nearest bus stops are located on Ladbroke Grove near the Underground Station. The bus stop has seating facilities and shelter and is about a 2 minute walk away.

Details of bus routes, service frequencies and destinations that can be accessed from nearby bus stops are summarised in the table below.

Service Number	Route Summary	Peak Frequency
7	Brunel Road (W3) - Russell Square	5-10 mins
23	Great Western Road (W10) - Eldon Street / Liverpool Street	5-10 mins
52	Victoria Station - Pound Lane (NW10)	5-8 mins
70	Acton Market Place - Queensberry Place	8-11 mins
228	Central Middlesex Hospital - Chippenham Road (W9)	8-12 mins
452	Station Terrace - Wandsworth Road Station	6-10 mins
N7	Northolt Station - Russell Square	Every 30 mins

Detailed timetable information and journey planner can be obtained from

www.tfl.gov.uk/travel-information/timetables/



Parking

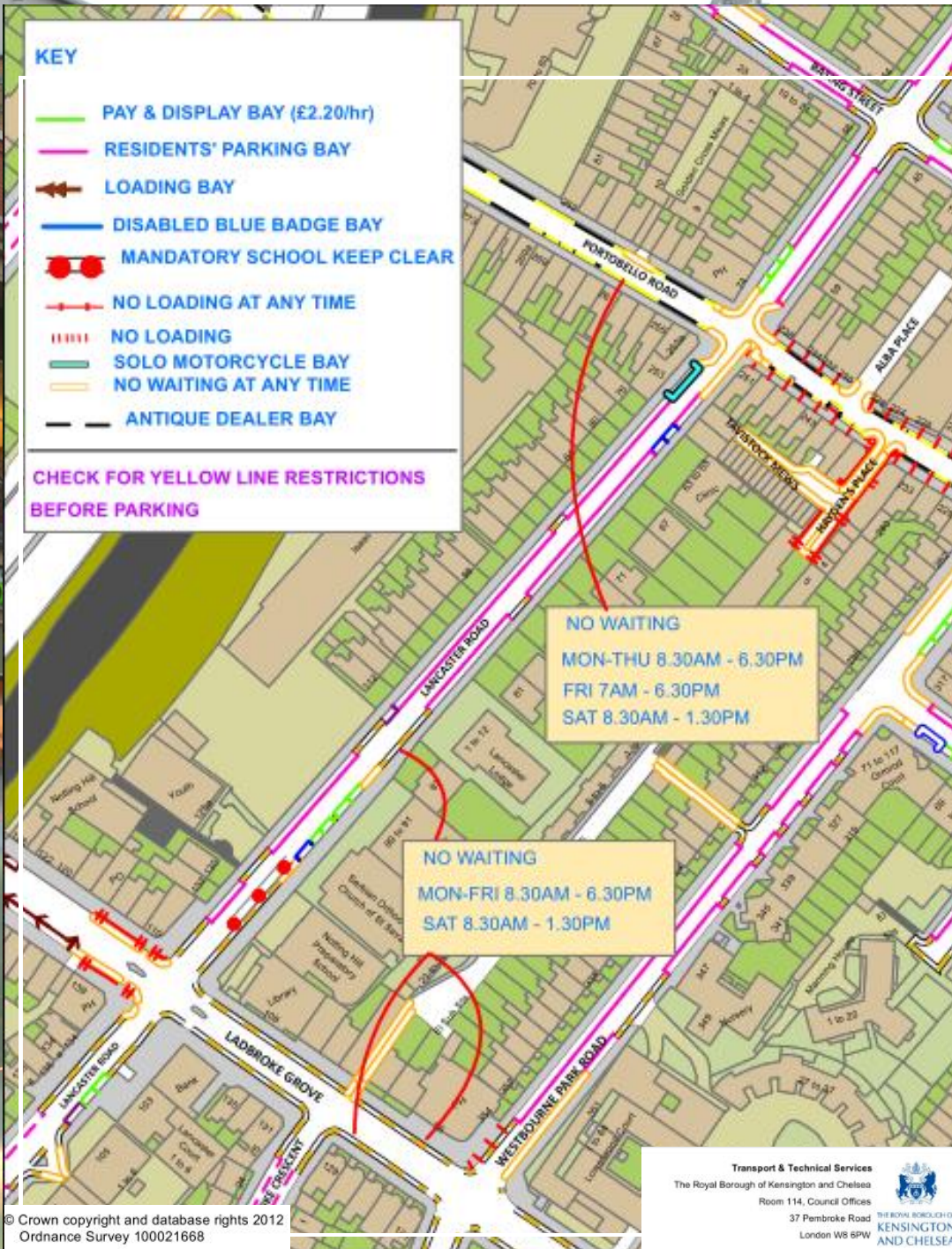
There is no onsite parking for staff or parents at Chepstow House School. Parents wishing to walk with their child into the school will need to park away from the site.

There are a number of Pay and Display parking spaces on Lancaster Road available just outside the Serbian Church, adjacent to Barclays Bank, on the opposite side of Ladbroke Grove.

The location of Pay and Display parking bays are shown in the plan opposite.

There are additional Pay and Display car parking spaces located at the following locations

- 6 Pay and Display bays are located on Lancaster Road - Tariff: £2.00 per hour (Max stay: 4 hours) - controlled between 8.30am to 6.30pm Monday to Friday;
- 3 Pay and Displays bays are located near Barclays Bank (same hours / tariffs);
- 3 Pay and Displays bays are located at the junction with Portobello Road (same hours / tariffs – Max stay 2 hours);
- 6 Pay and Display bays are located on Westbourne Park Road (same hours – tariffs);
- 15 Pay and Display bays are located on Portobello Road - Tariff: £1.00 per hour (max stay: 1 hour / same hours).



Kiss and Drop

If you need to drop your child off by car at Chepstow House School, please make use of the school's Kiss and Drop service.

Where is it located?

The kiss and Drop site is located immediately outside of the vehicular entrance to CHS on the single yellow line and can accommodate up to two cars at any one time.

To ensure the Kiss and Drop service is both safe and efficient trained staff will be available in the mornings to help assist pupils from the car and direct them safely to the schools pedestrian entrance and main reception.

How to use it

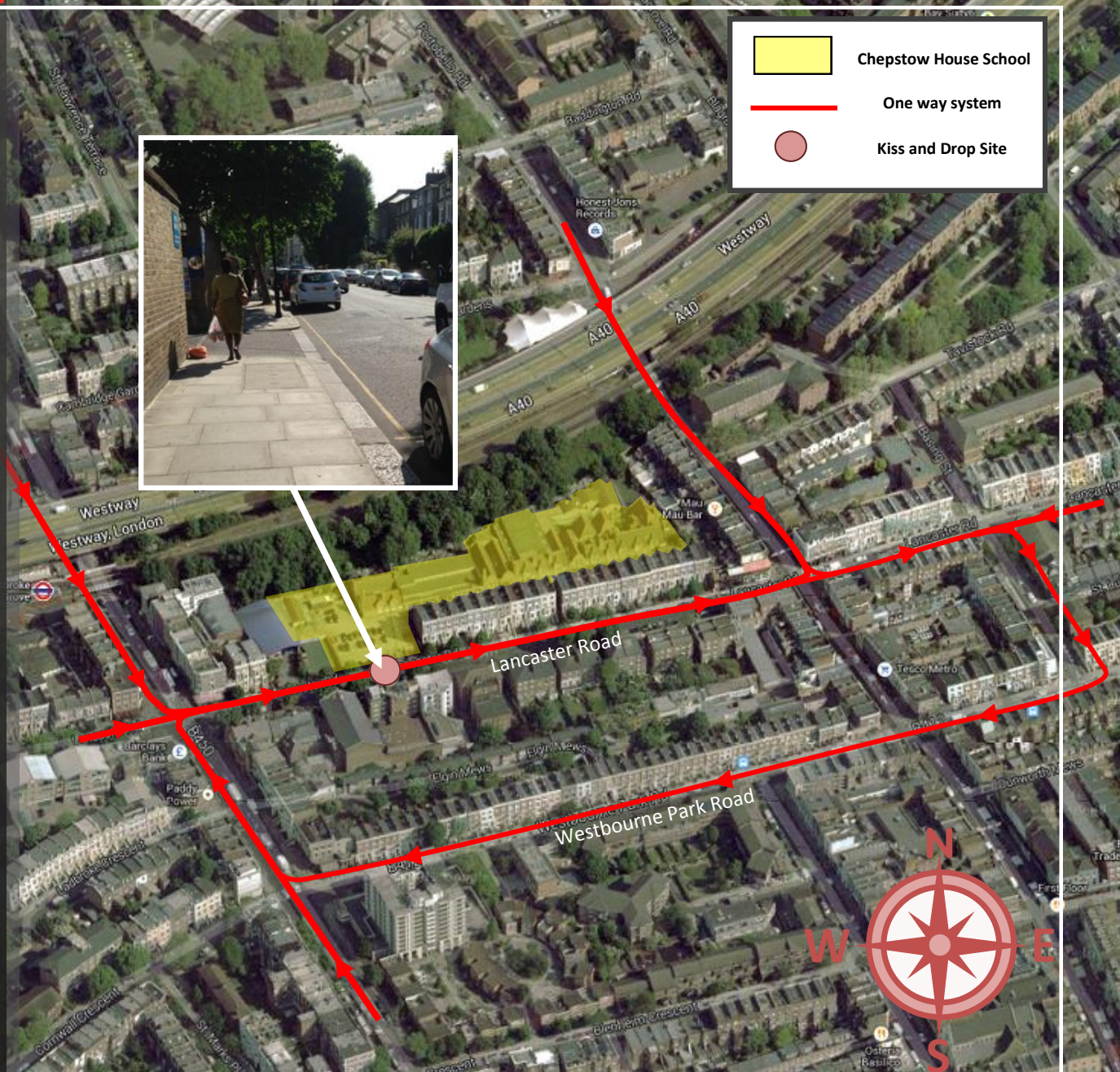
To make use of the Kiss and Drop service you will need to approach CHS from the **west**. If you are arriving from the **east** of CHS it is requested that you follow the one-way directional system shown opposite and loop around from Westbourne Park Road and Ladbroke Grove.

This one-way system is in place to reduce the need for children to cross Lancaster Road and to ensure no interference with the kiss and drop service used by our neighbouring school on the opposite side of the road.

- On arrival make sure you stop as far forward as possible so that other vehicles can pull in behind you.
- Please note that the Kiss and Drop service is not intended to provide a parking space for parents to wait in. We ask that when dropping off children all goodbyes are quick so as not to cause delay to other parents dropping off their children.

When does the kiss and drop service operate?

The Kiss and Drop service will be in operation between **08:15 and 08:30**. If you arrive outside of these times you will need to use the pay and display parking spaces on Lancaster Road.



London Underground

Chepstow House School is only 2 minutes walk from Ladbrooke Grove Underground Station. The station is on the **Circle and Hammersmith & City lines** with trains at a 5 minute frequency during the school travel peaks.

Oyster Card

If you haven't already got one, Oyster is generally the cheapest way to travel. Oyster cards can be purchased from one of the 4,000 newsagents, shops or stations in London.

- An Oyster card can store up to £90 of credit
- It can be used on bus, Tube, trams, DLR, London Overground and National Rail services in London
- Oyster single fares are generally cheaper than cash fares
- Credit can be used as you need it and doesn't expire
- Daily price capping automatically calculates the cheapest fare for all the journeys you make in a single day
- More information can be found at www.tfl.gov.uk/tickets

A maximum of four children aged under 11 can travel **free** on Tube, DLR and London Overground services at any time as long as they are accompanied by an adult using a valid Visitor Oyster card or ticket.

Auto-Top Up

Auto top-up ensures you never run out of pay as you go credit by automatically topping up your Oyster card when needed. To set up Auto-top up:

- Log in to your online account or create one
- Set up Auto top-up by choosing the 'add/renew/top-up ticket' option
- Select a top-up amount (£20 or £40)
- Choose a station where you want to activate (start) Auto top-up
- You can choose your Auto top-up amount to be either £20 or £40. This will be added to your Oyster card when you touch it on any card reader, including those on buses, as part of a normal journey whenever your balance falls below £5.



Up to the Minute Travel Advice



Journey Planner
To plan your quickest route
round London, go to
tfl.gov.uk/journeyplanner



London Underground
customer services
Call 0845 330 9880
8am-8pm every day



Free mobile travel alerts,
sign up at tfl.gov.uk/alerts



Congestion Charging
For payment details, call
0845 900 1234 or visit
tfl.gov.uk/cclondon



Visit tfl.gov.uk/oyster



Maps
For the latest London Underground
tube map visit
tfl.gov.uk/maps



24-hour travel information
Call 020 7222 1234, or
email travinfo@tfl.gov.uk

London Travelwatch call 020 7505 9000
or visit www.londontravelwatch.org.uk

Do You Know Your Carbon Footprint?

If you were to cycle or walk to school rather than use your car just once a week, you could reduce your carbon footprint by up to 20%. To quickly calculate your carbon footprint, visit the Carbon Calculator Website: carboncalculator.direct.gov.uk.

Around 40% of CO₂ emissions in the UK are caused by things we do as individuals. Across these activities, car travel is the single biggest contributor to personal CO₂ emissions; here are 5 ways to save 5 miles:



Know before you go—using a journey planner can help you find the quickest and easiest route to travel by public transport or car.

www.transportdirect.info



Plan ahead—to combine several car trips as part of the same overall journey rather than lots of separate trips. The CO₂ and fuel cost savings add up, and make best use of precious time.



Life on two wheels—nearly a quarter of all car trips are under two miles. Cycling those two miles instead can take just 12 minutes and is a great way to exercise for both you and your child. Each two-mile trip can burn over 100 calories.



It's good to walk—its tempting to use the car to travel just a mile down the road, but it is the perfect distance to walk. As well as health benefits, on average, walking a years worth of one mile trips instead of driving can save you over £160 a year in fuel.



Share a car—travel by car with friends and family or other parents from school.



Contact Us

For further information and advice regarding travel opportunities at Chepstow House School please refer to the parents section of the school's website

www.chepstowhouseschool.co.uk



Produced by WSP & Alpha Plus Group